

GREATER GEORGIA BASIN

STEELHEAD



Recovery Plan
www.SteelheadRecoveryPlan.ca



PACIFIC
SALMON
FOUNDATION

**GREATER GEORGIA BASIN
STEELHEAD RECOVERY
ACTION PLAN**

SEPTEMBER, 2002

AF Lill PEng.

AF Lill and Associates Limited
5569 Cortez Road, North Vancouver BC, V7R 4P9

With Staff Assistance from
Ministry of Water, Land and Air Protection
British Columbia Conservation Foundation

Prepared for the Pacific Salmon Foundation

With funding provided by the Province of British Columbia

bringing them back

stream by stream



Current Status

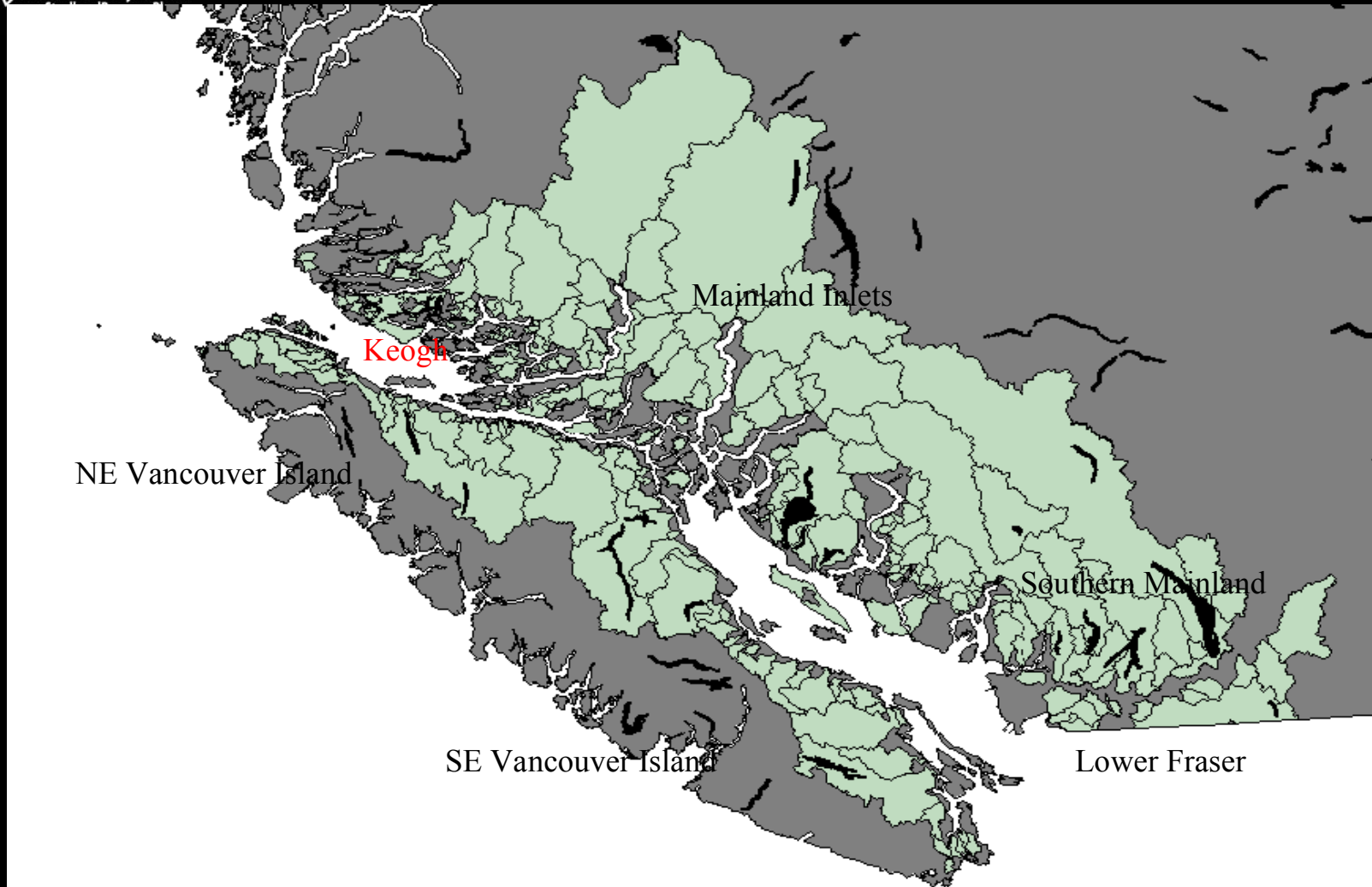
This is a work in progress

My report is very much a "living" document that can and will be fine-tuned with public input as we move forward with implementation.

GREATER GEORGIA BASIN
STEELHEAD



Steelhead Watersheds





Wild Steelhead in the 58 Highest Priority Watersheds

- Stocks in 48 of the 58 watersheds are now in decline or at very low levels





- 50 of 54 winter run stocks are at or below “conservation concern” status most years (Exceptions – Salmon R (Van Island), Alouette, Chehalis, Chilliwack)
- All but one or two of the 27 summer-run stocks are at or below “conservation concern” status most years

Conservation Framework

Reference thresholds and management zones





Reasons for Decline

- Impacts of logging, agriculture, riparian development, hydro projects, fishing and fishing-related mortality.
- Marine survival has declined from 10- 15% to less than 4% with the result that some stocks are probably unable to replace themselves.



Objectives

- Stabilize and restore wild steelhead stocks and habitats to healthy self-sustaining levels
- Maintain and restore angling opportunities



Potential Wild Steelhead Recovery Actions

- Improved Habitat Protection
- Stream Fertilization
- Physical Habitat Restoration
- Living Gene Bank Experiment
- Additional Stock Management Measures
- Improved Regulatory Compliance
- Listing Endangered Stocks



Fish Culture

- **Expanded Quatse Smolt Production**
- Nimpkish and Kokish Community Projects
- Tsitika captive brood for Campbell
- **Proposed Trent and Tsable Transplants**
- Puntledge and Cowichan Augmentation
- **Proposed Goldstream Augmentation**



Options

- Stand-Alone GGB Steelhead Recovery Initiative
- Multi-species Recovery Initiative
- Status Quo



Greater Georgia Basin Steelhead Recovery Plan

- Built on watershed summaries developed through consultation with Ministry staff
- Prepared draft projects and budgets for an overall plan
- Starting point for satisfying the criteria for recovery plans (NMFS '96)



Basic Requirements (NMFS '96)

- Substantive protective and conservation elements in place for recovery
- High level of certainty strategy will be properly implemented – necessary authorities, commitments, funding, staffing, enforcement measures
- Comprehensive monitoring program
- Regular public reporting of results



Watershed Summaries

- Regional biologists have estimated current stock trends and status and established :
- steelhead habitat capacities and targets;
- watershed classifications (wild, augmented, or hatchery);
- regulatory provisions;



- d) special habitat protection requirements;
- e) steelhead objectives and strategies and
- f) identified recovery options.

**** Input from stakeholders required**





Redefined Government Roles

- Strategic planning, prescriptive advice, evaluation
- Seed money through “Living Rivers” etc.
- Federal-Provincial cooperation
- More effective habitat protection and fisheries management



Increased Role for Partners and Public

- Project funding
- On the ground delivery and technical support
- Influence watershed-Based fish sustainability
- Program coordination and management



Funding Challenge

- A long term program is required with funding continuity for at least 10 years
- Government base funding needs augmentation not cutting
- Limited resources will be available from any one source





Estimated Total Funding Requirements for an Effective GGB Steelhead Recovery Plan

- 2001/02: Spent Approx. \$1.7 Million
- 2002/03: \$1.9 Million Have \$1.1 M+
- 2003/04: \$3.7 Million
- 2004/05: \$3.9 Million
- 2005 onward: \$4 Million



Implementation Recommendations

- WLAP to strike a scientific technical committee.
- Undertake early consultations.
- Governments and PSF should explore a public-private partnership.



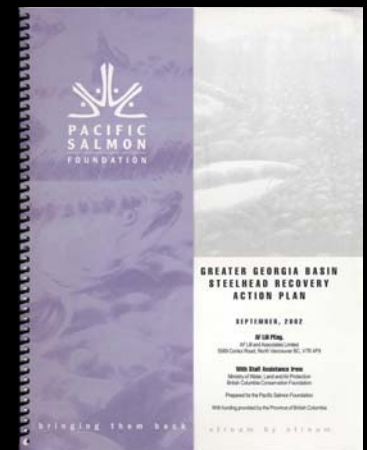
Implementation Recommendations cont'd

- Implement several complementary salmon and steelhead watershed initiatives.
- Federal and provincial governments to provide sufficient base resources and technical expertise for regulatory, planning, monitoring and fish culture activities.



Progress to Date

- Report Released – end of September 2002
- Field programs
- Endowment Fund Recovery Plans
- Steelhead Recovery Website





Consultations

- Feb 8th – Nanaimo:
Mid and SE Van Island
- Feb 15th – Port McNeill:
NE Van Island and Mainland
- Feb 22nd – Langley:
Lower Fraser and Delta
- March 1st – North Vancouver
S. Mainland Coast & Burrard Inlet



Feedback Sought

- Details in Watershed Plans
- Priorities for Action
- Public, Community and Angler Involvement
- Program Design and Implementation
- Where to from here

- Report to government by March 31st.

GREATER GEORGIA BASIN
STEELHEAD



To Recover Stocks or Do Nothing

